

1/2"x1/8" GLAZING TAPE

CONTINUOUS SEALANT JOINT

RST-3 EXTRUDED ALUMINUM SILL CAP, MITERED AND WELDED AT CORNERS

1"X1"X0.125" X 1 1/2" LONG ALUMINUM TEE BONDED W/ 1/16" DOUBLE-SIDED GLAZING TAPE

EPDM GASKET

NORTH AMERICAN STANDARD PROGRAM INSULBAR® THERMAL BREAK SHAPE 1953

0.125 CONTINUOUS ALUMINUM STIFFENER - OPERATOR SIDE ONLY

#10 X 5/8" PAN HEAD SCREW AT 18" O.C.

EXTRUDED EPDM HOLLOW GASKET

INSTALLATION NOTE:
* SET SILL ON FOAM WEATHER TAPE OR NON-SETTING CAULK

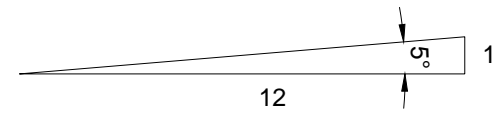
RS-1 EXTRUDED ALUM. SILL FRAME, MITERED AND WELDED AT CORNERS

GALVANIZED SADDLE FLASHING (BY OTHERS)

RSO-1 EXTRUDED ALUM. OPERABLE SILL FRAME, MITERED AND WELDED AT CORNERS

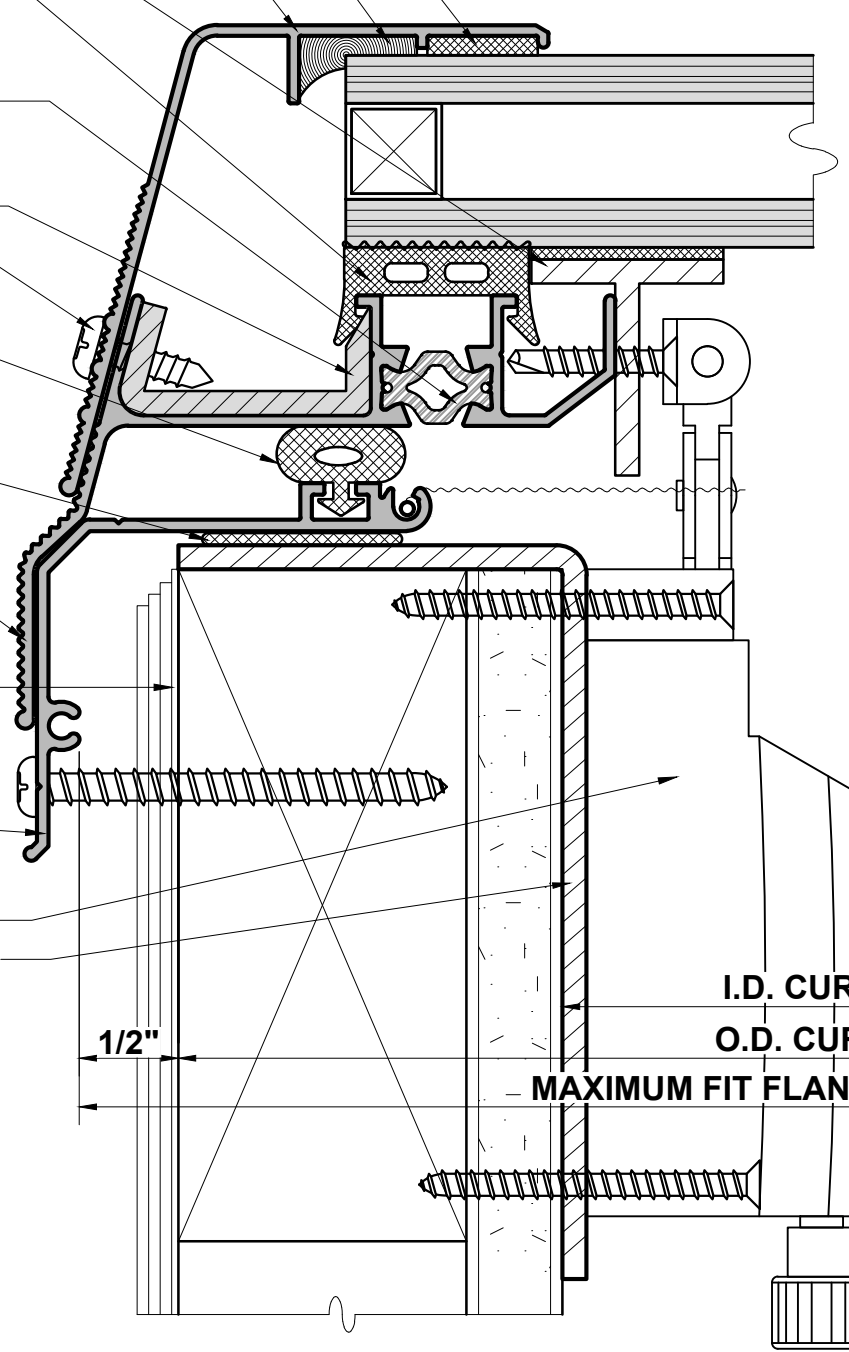
TRUTH MANUAL SKYLIGHT OPERATOR

0.125 FORMED ALUMINUM CLIP

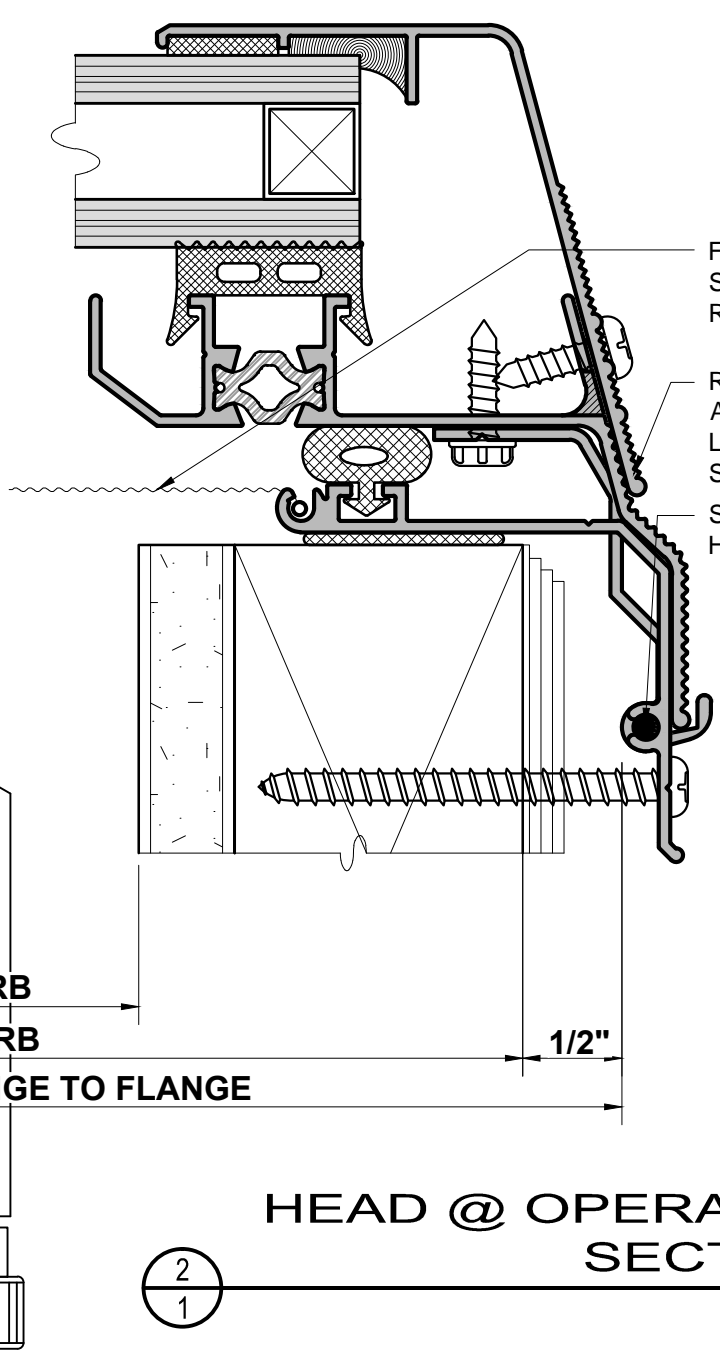


INSTALLATION NOTE:
RECOMMENDED MINIMUM PITCH OF 1:12 TO PREVENT POOLING WATER ON GLASS

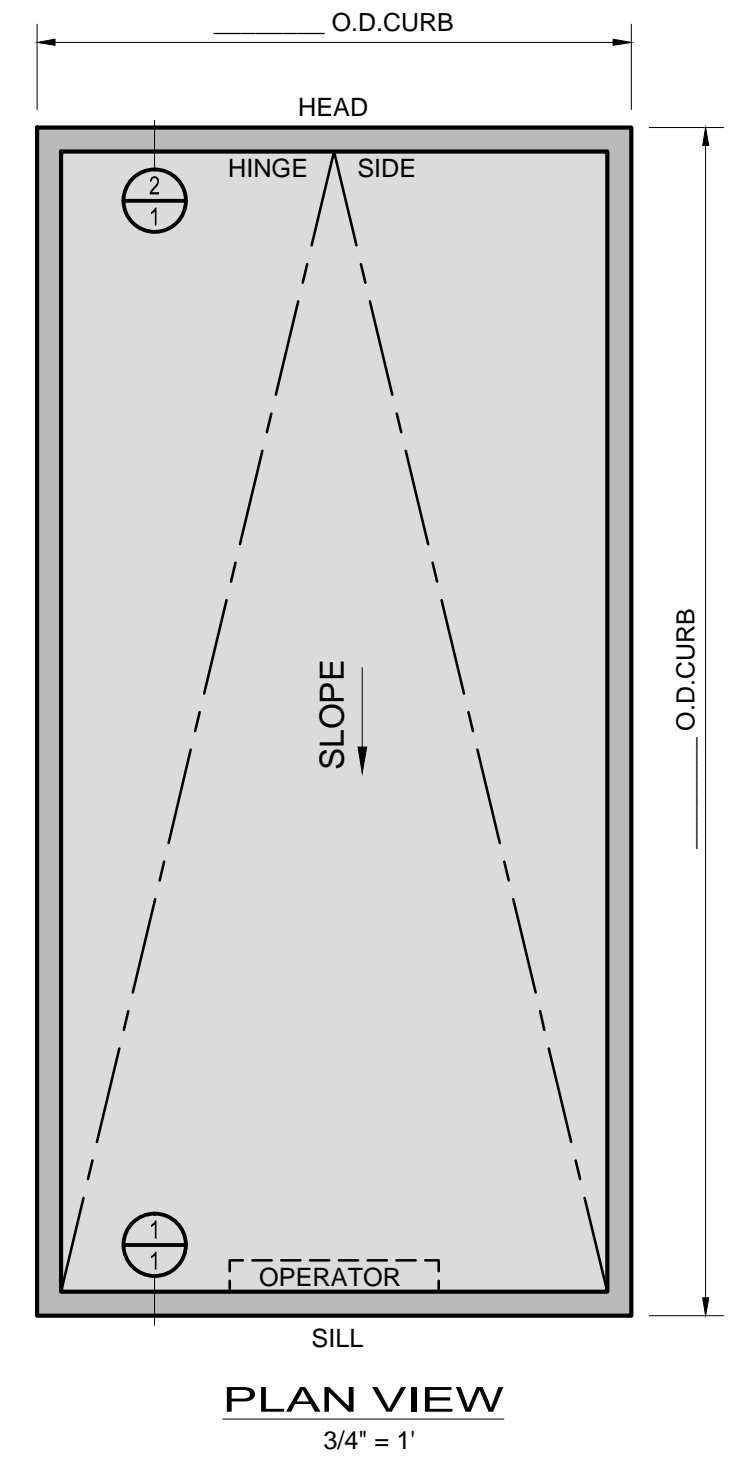
SKYLIGHT GLAZING SCHEDULE										
UNIT	QTY.	TYPE	SLOPE	O.D. CURB DIM. (W X H)	GLASS TYPE	LIGHT TRANS	U-VALUE	SHGC	# LITES	GLASS MAKE-UP
										FINISH:
										COLOR:
										INSTALLATION:
										FIELD GLAZED <input type="checkbox"/> SHOP GLAZED <input type="checkbox"/>



1 1 SILL @ OPERABLE SECTION FULL



2 1 HEAD @ OPERABLE SECTION FULL



PLAN VIEW 3/4" = 1'

 **Royalite**
MANUFACTURING, INC.

1055 TERMINAL WAY
SAN CARLOS, CA 94070
PHONE: (650) 637-1440
FAX: (650) 637-9770
www.royalite-mfg.com

JOB No.	PROJECT NAME:	SHEET No.
DRAWN BY:	SINGLE LIGHT OPERABLE INSTALLATION DIAGRAM	of
DATE:	REVISED DATE:	1